

Welcome to Back-to-School Night

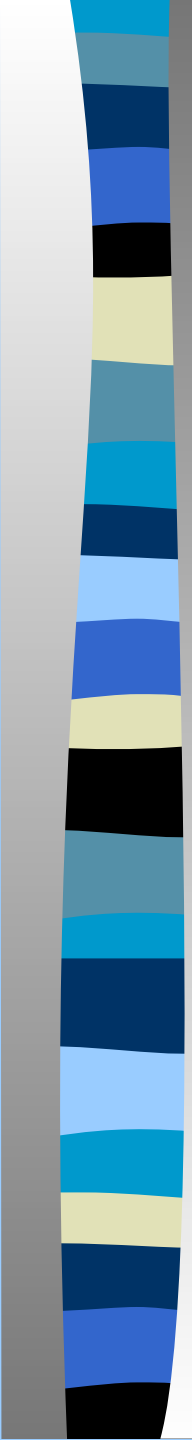
Presented by the Second Grade Team

Miss Birmingham, Mrs. Brown, Mrs. Canfield,
Mrs. Lawrence, Miss Pritts, Mrs. Ramsburg,
Mrs. Waugaman



Tonight's Presentation

- ā Introduction
- ā Language Arts and Math Overview
- ā Schedule
- ā Social Studies & Science Units
- ā Grading Policy and Report Cards
- ā Homework
- ā Thursday Folder / Communication Folder
- ā Discipline - PBIS
- ā Parent Volunteers
- ā Question and Answer Session



Daily Schedule

- 9:00-9:40 Writing
- 9:40-11:00 Math
- 11:00- 11:25 Social Studies/Science
- 11:25-12:00 Lunch
- 12:00-12:40 Specials
- 12:40-1:05 Independent Reading
- 1:05-1:35 Word Study
- 1:35-1:55 Recess
- 2:00-2:25 Whole group Reading
- 2:25-3:25 Small group Reading/Daily Five

Wednesday: double specials at 1:55

Specials



P.E.

Music

Art



Media Lesson once a month
Library Book Exchange every 2 weeks

L.A. Overview



- Fluency
- Word Study
- Literacy Centers
(Daily 5)
- Writing
- Guided Reading
Groups



Reading = Decoding + Comprehension

Language Arts Instruction



Comprehension Strategies

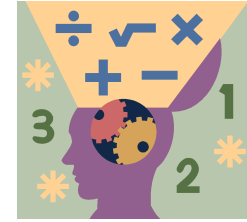
- Predicting (Patrick the Predictor)
- Clarifying (Clara the Clarifier)
- Questioning (Quincy the Questioner)
- Summarizing (Sammy the Summarizer)

Math Overview

- ❖ Students will receive rich, rigorous mathematics instruction based on the Maryland Common Core State Standards
- ❖ The instructional areas for second grade are:
 - Extending understanding of base-ten notation
 - Building fluency with addition and subtraction
 - Using standard units of measurement
 - Describing and analyzing shapes
 - Mastery of Addition and Subtraction facts



Math Instruction



- Second graders are expected to know fluently all facts to 20, both addition and subtraction by the end of the school year.
- Students will learn math facts in school; however, they will benefit greatly by regularly practicing math facts at home.
- Knowing math facts helps students to be successful in solving more complex math problems.
- There are 13 units throughout the year – students will take a unit assessment at the end of each unit.

Social Studies & Science Units



- My Community
- Community Leaders
- Finding the Moon
- Communities Over Time
- Changes
- Community Resources
- Life Cycles

Grading

□ Report Cards: Grade 2

A = Exemplary performance towards meeting grade level standards

B = Skilled performance towards meeting grade level standards

C = Satisfactory performance towards grade level standards

D = Minimal performance towards meeting grade level standards

F = Unacceptable performance towards meeting grade level standards

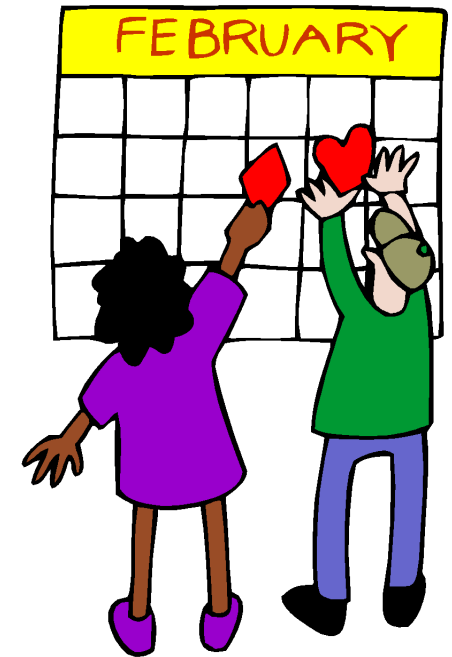


Grades are determined using classwork, assessments, observations, anecdotal notes, and effort.

Homework

Students should be working on homework fifteen minutes every night (Monday through Thursday).

- Ten minutes of this time should be spent reading a book.
- For the other five minutes, students should choose one activity on the homework menu to complete each night.
- Notebooks should be returned to school each morning!





Take Home Items

Thursday Folders

- ❖ Whittier, PTA or FCPS flyers
- ❖ Remove flyers
- ❖ Please sign the behavior card and return on *Friday*

Communication/Take Home Folders

- ❖ Student work (Please review with your child)
- ❖ Parent-teacher correspondence



Behavior

PBIS

Positive Behavior Intervention and Support

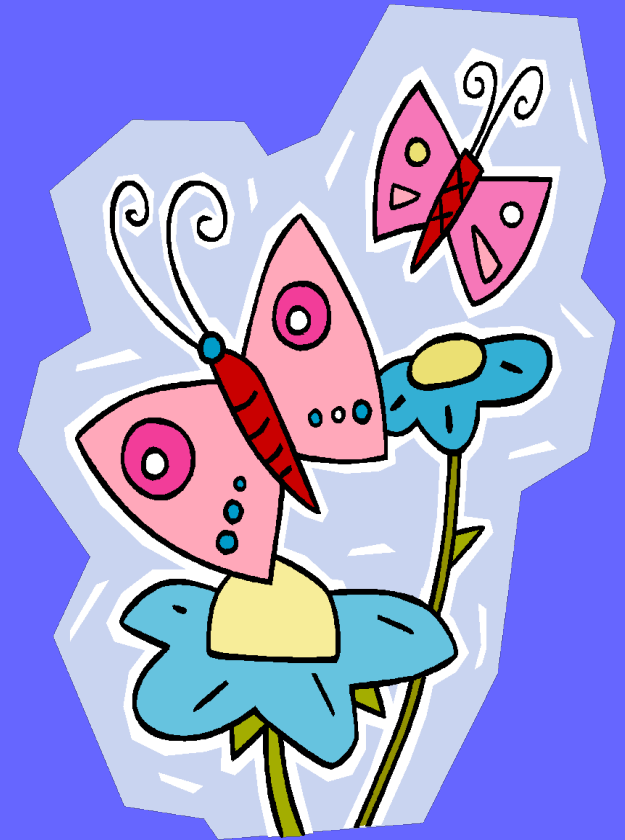
Whittier Hero - Help Everyone Respect Others by being...

Safe, Ready, Polite, Responsible

1. Following directions the first time they are given.
 2. Using appropriate words and actions.
 3. Keeping your body and objects in your own space.
 4. Talking at appropriate times.
 5. Completing assignments and participating in all activities.
- ✓ Behavior is monitored using a clip system
 - ✓ Hero Slips are given out daily by all staff to recognize exemplary behaviors
 - ✓ 15 minutes of extra recess will serve as a weekly reward to those students who end the day on green or blue.

Second Grade Field Trips

- Earth, Space, Science Laboratory/
Planetarium (December)
- Nature Center
- Other field trips to be determined





Important Reminders

- For any transportation changes, please let the office know by 3:00
- If your child is absent from school, please send in a note when they return.
- Please help your child remember to bring their Communication Folder and Homework Journal back to school each morning

Question & Answers

n Thank you for coming this evening

