

# Welcome to Valley Elementary

Let's Talk About  
Kindergarten

- Jason Bowser - Principal

# Communication



## Find Out First

- Email with Global news and specific notes about your child

## Valley's Home Page

- Detailed information about your child's teacher
- Phone

# Coming to Valley



- School day is 9:00 AM until 3:30 PM
- Car Riders may begin arriving at 8:30 AM and Dismissal is at 3:25 PM
- A note to inform the staff as to whether your child is a car rider on a particular day is requested
- AM Drop-off and PM Pick-up is on the back playground area
- Bus arrivals are in the front of the building – students arriving in cars should not be dropped off at the main entrance

# Lunch



- Lunch is \$2.05 (Reduced = \$.40) daily
- Breakfast is \$1.10 (Reduced - \$.30)
- Students may bring a packed lunch and purchase drinks – milk (white, chocolate, strawberry, or flavored waters) and a snack.
- Parents may deposit money in an account ([MySchoolBucks.com](http://MySchoolBucks.com)) for long periods of time (usually month to month)
- Lunch will begin at 11:00 AM and students have 35 minutes to eat followed by 10 minute recess (weather permitting)

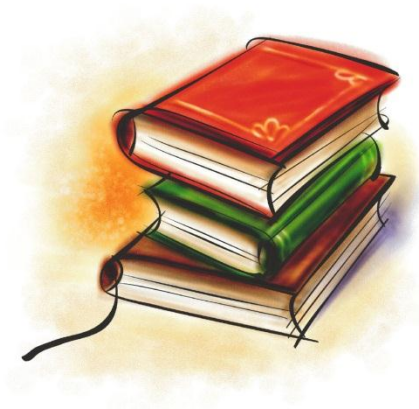
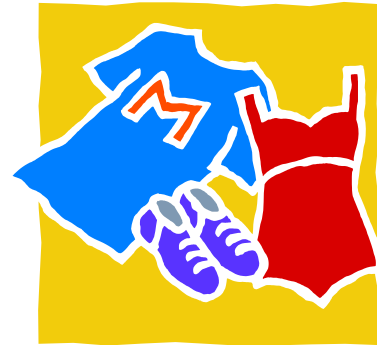
# Specials

- Art

- Music

- PE

- Library



# Illness



Regular school attendance is important for academic and social growth.

However, we do not want sick children coming to school. Please send a signed note explaining the absence within 2 school days to your child's teacher/front office.

# Other Important Things...

- Classroom Visits, Lunch Visits, etc.
  - (We love having you here, but it's okay to let go 😊) How to deal with Separation Anxiety
- Communication
- Bathrooms in the classrooms
- Field Trips and Chaperones



Questions?? Comments??